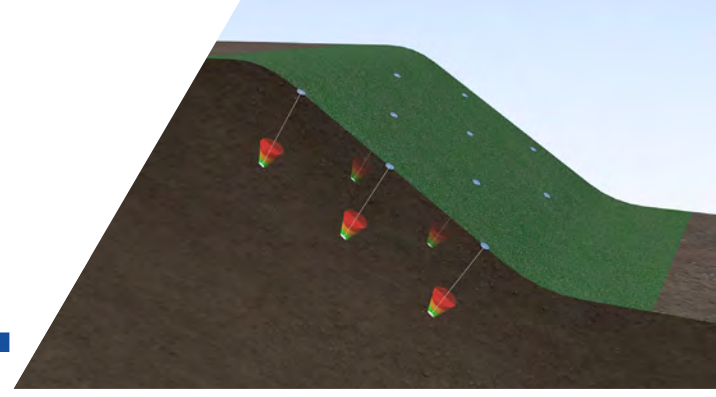


ANCHORING SOLUTIONS FOR EROSION CONTROL



To perform as designed, even the most effective erosion control solution requires proper installation techniques and some form of adhesion or mechanical connection to the erosive substrate they are protecting. Platipus has developed a range of ARGs® anchoring solutions that can secure any erosion control facing material or engineered revetment systems.



WHY USE PLATIPUS ANCHORS

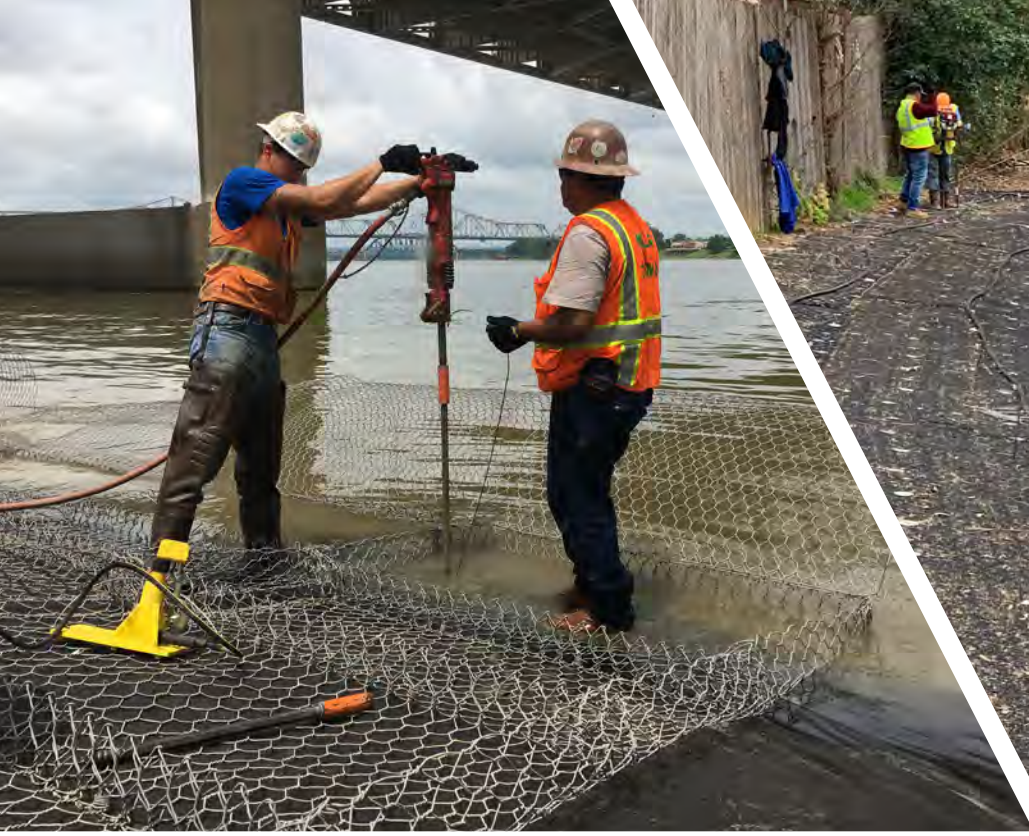
- Full technical assistance including conceptual proposals
- Anchors systems match/exceed the life of the integrated surface material
- Fast and easy installation using conventional handheld equipment
- On-site training and support through all stages of the installation process
- Anchors are post-tensioned to the engineers determined load (immediately quantifiable)



PLATIPUS ANCHORS CAN BE USED WITH THE FOLLOWING SURFACE

- Turf Reinforcement Matting (TRM)
- Geotextiles
- Geomembrane Linings
- Turf Pavers
- Lightweight Concrete Composite
- Geosynthetic Revetments
- Marine Mattress





PLATIPUS
EARTH ANCHORING SYSTEMS

Platipus Anchors Inc, 1902 Garner Station Blvd, Raleigh, NC 27603, USA
T: (919) 662-0991 E: CIVILS@PLATIPUS.US
W: WWW.PLATIPUS.US